

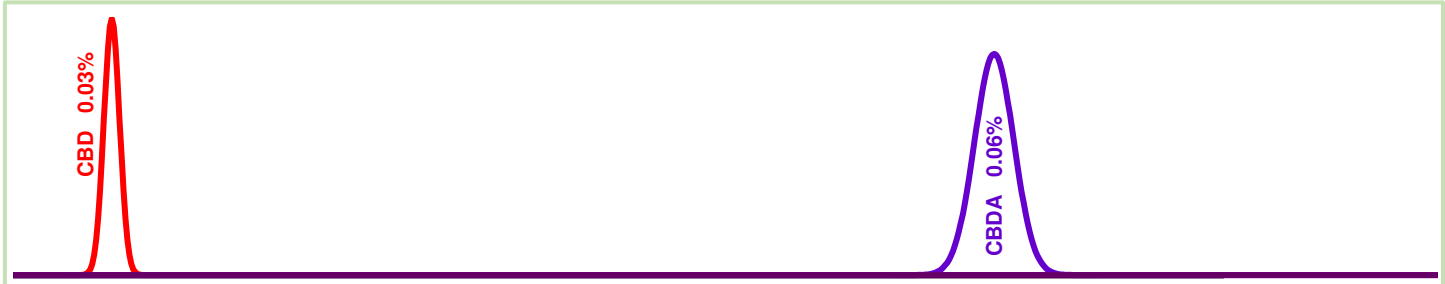
**Test Certificate No.:** 151-002725  
**Sample:** Ultra CBD Base  
**Matrix:** Tincture

**Customer:** CBD Life Holdings  
 info@ultracbd.com

**Date Received:** 3/18/2015  
**Test Date:** 3/20/2015  
**Technician:** NML

**CANNABINOID PROFILE [Procedure WI-10-04]:**

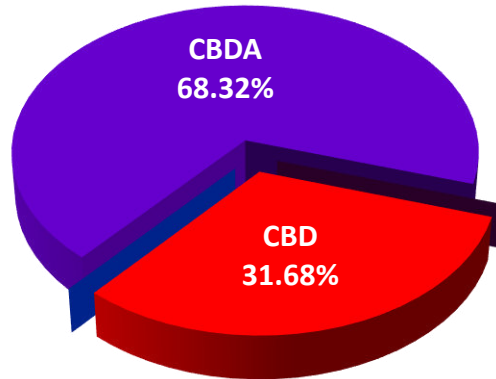
This test method was performed in accordance with the requirements of ISO/IEC 17025. These results relate only to the test article listed in this report. Reports may not be reproduced except in their entirety.



Test	Weight %	Conc.
CBD	0.03%	0.29 mg/mL
Δ8-THC	< 0.01%	< 0.01 mg/mL
Δ9-THC	< 0.01%	< 0.01 mg/mL
CBC	< 0.01%	< 0.01 mg/mL
CBN	< 0.01%	< 0.01 mg/mL
CBG	< 0.01%	< 0.01 mg/mL
THCA	< 0.01%	< 0.01 mg/mL
CBDA	0.06%	0.64 mg/mL
CBGA*	< 0.01%	< 0.01 mg/mL
Other	< 0.01%	< 0.01 mg/mL
<b>Max THC</b>	< 0.01%	< 0.01 mg/mL
<b>Max CBD</b>	0.08%	0.85 mg/mL
<b>Total Active</b>	0.03%	0.29 mg/mL
<b>Total</b>	0.09%	0.93 mg/mL

- CBD
- D8-THC
- D9-THC
- CBC
- CBN
- CBG
- THCA
- CBDA
- CBGA
- Other

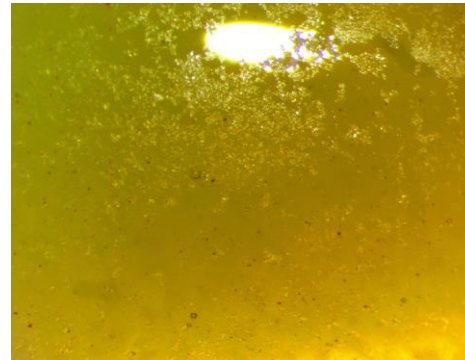
### Total Cannabinoid



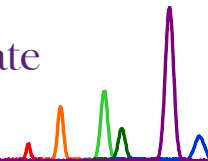
\*CBGA values are semi-quantitative, based on analyte response relative to THCA.

**VISUAL AND MICROSCOPIC INSPECTION [Procedure WI-10-03]:**

Inspection Comments: None



<b>ProVerde Laboratoires, Inc.</b> 420 Fortune Blvd. Milford, MA 01757 617.221.3356	<b>Authorization:</b> Christopher Hudalla, CSO	<b>Date</b>
	<b>Signature:</b> <i>Christopher Hudalla</i>	3/23/2015



Test Certificate No.: 151-002725\_TP  
Sample: Utra CBD Base  
Matrix: Tincture

Customer: CBD Life Holdings  
info@ultracbd.com

Date Received: 3/18/2015  
Test Date: 3/19/2015  
Technician: NML

TERPENE PROFILE (Qualitative Only)

This test method was performed in accordance with the requirements of ISO/IEC 17025. These results relate only to the test article listed in this report. Reports may not be reproduced except in their entirety.

### Qualitative Terpene Profile



<b>ProVerde Laboratoires, Inc.</b> 420 Fortune Blvd. Milford, MA 01757 617.221.3356	<b>Authorization:</b> Christopher Hudalla, CSO	<b>Date</b>
	<b>Signature:</b> <i>Christopher Hudalla</i>	3/22/2015

**Test Certificate No.:** 151-002725\_VC  
**Sample:** Ultra CBD Base  
**Matrix:** Tincture

Customer: CBD Life Holdings  
 info@ultracbd.com

Date Received: 3/18/2015  
 Test Date: 3/19/2015  
 Technician: NML

***VOLATILE ORGANIC SOLVENTS (VOCs)***

This test method was performed in accordance with the requirements of ISO/IEC 17025. These results relate only to the test article listed in this report. Reports may not be reproduced except in their entirety.

Ret. Time [min]	Area [mV.s]	Amount [ppm]	Compound Name	Test Status <sup>2</sup>
1.193	0.5	4.1	methanol	PASS
1.527	1.5	7.6	ethanol	PASS
1.917	6.6	31.4	isopropanol	PASS
2.179	59.6	283.1	unidentified	PASS
3.439	0.5	1.4	heptane	PASS
Total	1,167.9	327.6		

- 1) ND = None detected to Lowest Limits of Detection (LLD)
- 2) Based on USP recommended limits for residual solvents

<b>ProVerde Laboratoires, Inc.</b> 420 Fortune Blvd. Milford, MA 01757 617.221.3356	<b>Authorization:</b> Christopher Hudalla, CSO	<b>Date</b>
	<b>Signature:</b> <i>Christopher Hudalla</i>	3/23/2015